

EDITION #56 JANUARY 2024

Inside

LIFESTYLE & INTERIORS



GNVPEL

Inside

EDITION #56



Inside "The Farm," Brandon Architects spearheads a symphony of design, blending modern luxury seamlessly with farmhouse allure. Teaming up with Patterson Custom Homes and Blackband Design, they created a sanctuary in Santa Ynez Valley. The open-plan kitchen boasts a serene palette, while the landscaped outdoors, with a manicured lawn and family-centric poolside, reflects a luxurious embrace of farm life. Timeless tranquility meets contemporary elegance in this haven.

CAFÉ

DISTINCT BY DESIGN™



Café™ Specialty Grind and Brew Coffee Maker with Thermal Carafe

WWW.CAFEAPPLIANCES.COM

Inside

M A G A Z I N E

2024

**REDEFINING
LUXURY LIVING**





Home Away from Home

Welcome to our first edition of the year, where the allure of retreats takes center stage, whether it's a farmhouse or wherever your heart gravitates. In a world racing towards tranquility, our magazine captures the essence of a lifestyle longing for a personal sanctuary—a home away from the daily grind. The trend towards holiday homes is more than design; it's a declaration of a slower, more intentional existence. As editor, I embrace this shift, and I invite you to immerse yourself in the pages that unfold stories of these retreats. Let this edition be the inspiration that shapes your year, urging you to envisage and create your haven. Happy reading!

LePang









THIS WEEK'S INTERIOR TRENDS #56

NATURALLY TEXTURED

The moodboard for "The Farm" evokes a sophisticated yet inviting ambiance. Dominated by natural hues, whites, and cream, it mirrors the farmhouse aesthetic. The palette extends from the white stone island and cream glossy tiled backsplash in the kitchen to the soft, palatable white oak throughout. Rich russet bar stools, a black frame, and brass and bronze dome-shaped pendants add striking contrasts. Outdoors, the manicured lawn and ancient trees bring a sense of timeless tranquility, complemented by the modern allure of the poolside. The materials harmonize seamlessly—stone, wood, and steel, creating a tactile and visually pleasing tapestry that defines this luxurious farmhouse retreat.

A photograph of a rustic interior. The room features thick, light-colored stone walls and a high, vaulted wooden ceiling with exposed beams. In the center, a large stone fireplace has a fire burning. A television is mounted on the wall above the fireplace. The floor is made of light-colored wood. A patterned rug is laid out on the floor. To the right, there is a long, dark metal table with a lamp and a book. A wooden door is visible on the left side of the frame.

HOME & AWAY



HOME & AWAY

EDITION 56

As the undeniable attractiveness of farmhouses takes center stage, it's not merely about their versatility but a profound shift in lifestyle. Today, many are trading city life for a more deliberate existence, embracing the idea of cultivating their haven on their own land—a sanctuary where work becomes a pleasure.

In parallel, the relevance of holiday homes persists. A retreat where family gathers, friends are hosted, and the rhythm of daily life yields to the rejuvenating embrace of fresh air. But what is the cost of such a lifestyle shift? It's a question of openness to change and embarking on a new adventure—a quest for a smart, energy-efficient, sustainable, and undeniably beautiful house.



Enter "The Farm," a masterpiece in the heart of Santa Ynez Valley's wine country—an epitome of thoughtful design and execution. Spearheaded by the acclaimed Brandon Architects, a California-based powerhouse, renowned for their leading expertise, reputation, and extensive repertoire in the industry.

Teaming up with industry giant Patterson Custom Homes, known for their unwavering commitment to excellence, "The Farm" becomes a testament to the collaborative prowess of these visionaries. Not to be overlooked is the contribution of Blackband Design, adding their signature touch to elevate the aesthetic.

Situated amidst the picturesque Santa Ynez Valley, the property boasts an interconnected design with three main sections: the Garage, housing a stunning guest bunk house; the Living area; and the Sleeping area. The use of diverse materials, including stone, black steel, and wood, crafts a modern farmhouse masterpiece. Reclaimed woods intertwine with luxury materials, while expansive glass doors blend indoor and outdoor spaces.

"The Farm" is a symphony of meticulous details. Oak vaulted ceilings, flooring, and a variety of tones and textures create a harmonious interior. The glass-surround passage, resembling a modernized bridge, enhances the open atmosphere. The outdoors, resembling a courtyard, exude serenity, accentuated by an infinity pool that gracefully integrates with nature.

The pièce de résistance is the majestic trees, seemingly rooted in time, reflecting on the pool—a poetic manifestation of the intersection between the new and the ancient land. Brandon Architects, Patterson Custom Homes, and Blackband Design have orchestrated an opus of design, seamlessly merging the character of the indoors with the tranquility of the outdoors.

In the discerning world of property, architecture, and interior design, "The Farm" earns an emphatic nod. It stands not just as a residence but as a testament to a lifestyle—an ode to the marriage of modern luxury and timeless serenity, where every detail reflects a commitment to craftsmanship and an unwavering pursuit of beauty in every form.























INSIDE

KITCHEN

The Perfect Balance

The open-plan kitchen within "The Farm" exudes a captivating serenity, seamlessly integrating with the overall design. Its natural color scheme, accentuated by whites like the pristine stone island and cream glossy tiled backsplash, embodies the quintessential farmhouse aesthetic. Noteworthy elements include rich russet bar stools with a black frame, adding a striking contrast, and exquisite brass and bronze dome-shaped pendants elegantly hovering over the island.

The range top griddle burner stove and stainless steel full-covered hood inject a touch of sophistication, harmonizing with the farmhouse charm. The choice of white oak, soft and palatable, contributes to the modern richness of the farmhouse style. The kitchen is a manifestation of thoughtful design, where every detail resonates with a balance of contemporary elegance and timeless farmhouse allure.













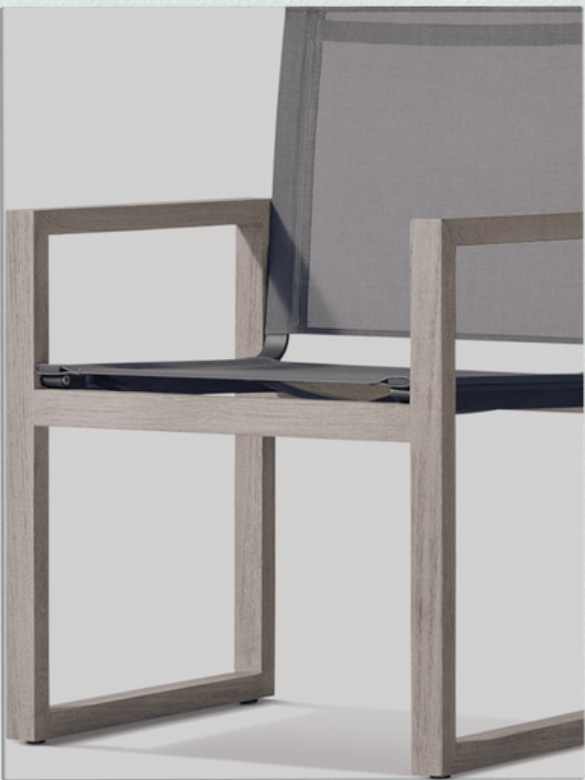
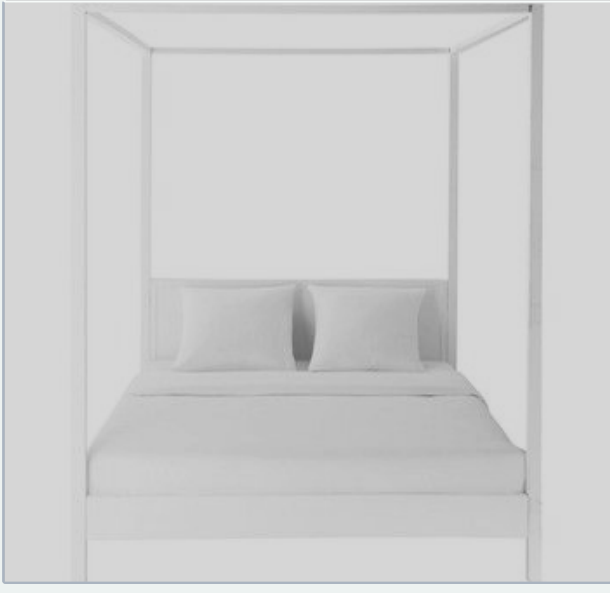




INSIDE GUIDE #56

Inside
STYLE

THE
CATALOGUE



INSIDE TRENDS #56

ENTRY STYLE



①

ECHO CONSOLE TABLE / TIN ROOF FURNITURE
Bluestone top with a finely crafted iron base

②

PICTURE LIGHT SCONCE / SCICOSSO
Small brass sconce for picture lighting

INSIDE TRENDS #56

LIVING STYLE



- ① **ARCO COFFEE TABLE / AMY CRAIN**
Dark frosted glass seamless arched table
- ② **BEIGE L-SHAPED SECTIONAL / LEPANG™**
Upholstery Fabric/ Mink Velvet Beige sectional sofa
- ③ **LAS PALMAS ROCKING TEAK CHAIR / DEAR KEATON**
Teak woven rocking style armchair
- ④ **MODERN FOLDABLE ZEBRA HIDE STOOL/ ZINC DOOR**
Zebra hide and black iron chair

INSIDE TRENDS #56

LOUNGE STYLE



- ① **LEATHER CHAIR / LEE INDUSTRIES**
Phoenix Natural Leather with Contrasting Fabric Seat & Back
- ② **ORELIA LAMP / DARK KEATON**
White ceramic table lamp with white linen shade
- ③ **SUEDE L-SHAPED SECTIONAL / CRATE & BARREL**
Olive Suede sofa upholstery with oak base.
- ④ **MOLLIE ROUND OTTOMAN / BALLARD DESIGNS**
Crafted of hardwood and curated fabrics.

INSIDE TRENDS #56

DINING STYLE



- ① NOIR NEVA DINING CHAIR / **PAYNES GRAY**
Seagrass and Teak woven dining chair
- ② MODERN CHANDELIER / **ALISON BERGER GLASSWORKS**
Glass Blown Iron sculptured chandelier
- ③ ELM SIDEBOARD / **BEACHWOOD**
Recycled elm sideboard with drawers
- ④ FARMHOUSE DINING TABLE / **HOMARY**
Wood tabletop in concrete gray 8 seater table

INSIDE TRENDS #56

KITCHEN STYLE



- ① **COMMERCIAL-STYLE STOVE/ CAFÉ™ APPLIANCES**
Gas Rangetop with 6 Burners and Integrated Griddle
- ② **ARIA PENDANT / ALLIED MAKER**
Brass and Bronze interior dome pendant light
- ③ **HARDY BACKLESS STOOL / POTTERY BARN**
Brown leather saddle style backless stool with black iron base
- ④ **FULLER 2 HANDLE DOUBLE FAUCET / KINGSTON**
Two handle Deck Mount bridge brushed brass faucet

INSIDE TRENDS #56

BEDROOM STYLE



①

WHITE CANOPY BED / **MAISONS DU MONDE**
White canopy modern rendition luxury bed

②

ANTIQUE BENCH / **SAFFRON + POE**
Elmwood reclaimed wood bench

③

STRING LANTERN / **NICKEY KEHOE**
Japanese garden lantern style black string lantern

④

MARKET NIGHTSTAND / **FOURHANDS**
Dark mahogany large pedestal

INSIDE TRENDS #56

BATHROOM STYLE



- ① OVAL WHITE CERAMIC SOAKING TUB / **ADM BATHROOM**
Gas Rangetop with 6 Burners and Integrated Griddle
- ② LEGERRO WALL SCONCE / **CB2**
Cotton/linen blend shade, and extra-long silhouette iron base
- ③ EGON MIRROR / **UTTERMOST**
3-dimensional design with an outer iron frame in warm gold
- ④ SEAGRASS PENDANT/ **OUR BOAT HOUSE**
Hand woven natural seagrass canopy pendant

INSIDE TRENDS #56

EDITOR'S PICK

I love the versatility of this chair by Lee Industries.



Stripes



Birds



& Shapes

INSIDE

OUTDOOR

Feels Like Home

Being outdoors at "The Farm" feels like a luxurious embrace of farm life. It transcends the ordinary, seamlessly merging the sophistication of luxury living with the rustic charm of the countryside. The meticulously manicured lawn, clean shrubs, and ancient trees create a harmonious landscape that whispers of timeless tranquility.

This home exudes a family-centric atmosphere, embodying the essence of how life is authentically lived on a farm. The poolside becomes a canvas for enduring family moments—long summer lunches that stretch into late evenings. The pergola, a standout feature, gracefully covers the dining area, providing a perfect haven for family gatherings. The connection to the indoors through trendy wooden seating and open glass doors enhances the relaxed atmosphere, creating an idyllic space to unwind on any given day. "The Farm" not only redefines luxury but seamlessly integrates it into the heart of farm life, where every detail echoes the warmth of family and the art of gracious living.





INSIDE TRENDS #56

OUTDOOR STYLE



①

AEGEAN CHAIR / RH

Reticulated foam cushions with wood & aluminum frame

②

ACADEMY DINING TABLE / BIRCH LANE

Clean lines and durable reclaimed teak wood dining table

③

DEKO VASE / WOHNZIMMER

Ceramic decorative natural wave vase

④

SKAGERAK TRAY / TROUVA

Handmade matte wood sculptured serving tray

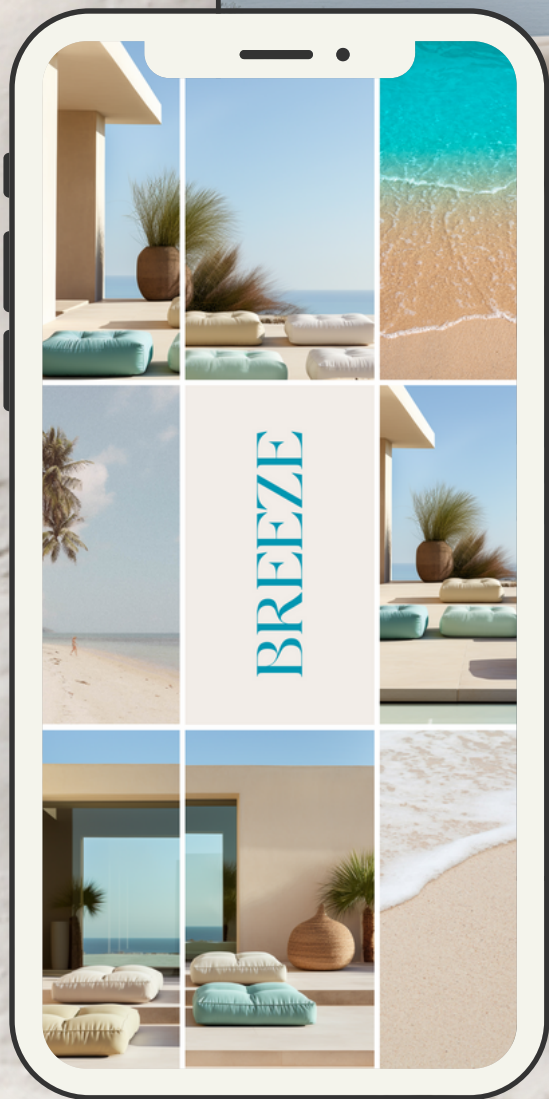








Refreshing
your
Outdoors...



info@lepangluxuryinteriors.com



LEPANG

LUXURY INTERIORS

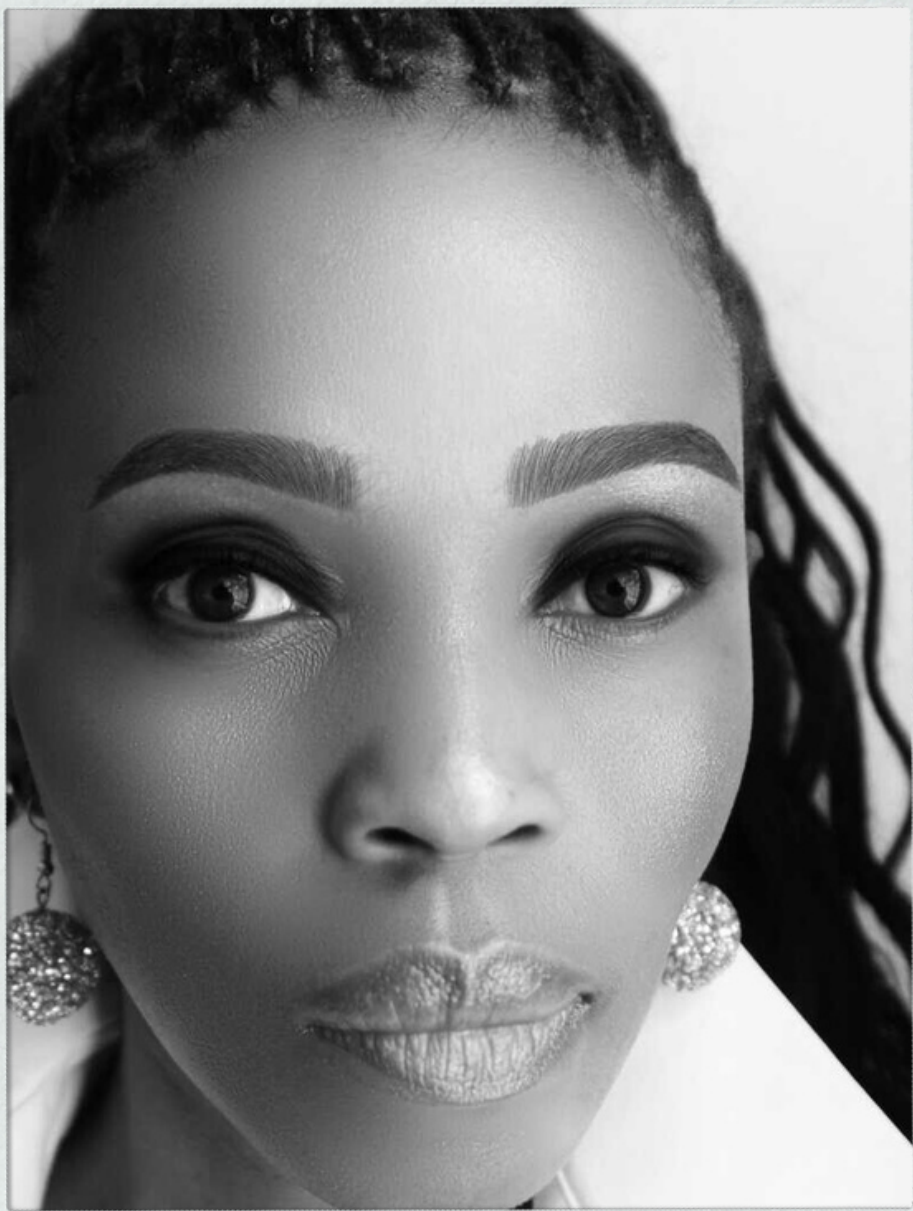
SETTING THE STANDARD

RESIDENTIAL | COMMERCIAL | HOSPITALITY

Made With Love



GNAPPEL
LUXURY INTERIORS



LEPANG FERGUSON

Becoming a Creative Maestro & Unveiling the Symphony of Design

Inside my world, I'm not just a designer, artist, or author; I'm the curator of dreams, an architect of emotions, and a storyteller in every stroke. My journey through the vast canvas of the lifestyle industry started with graphic design and product development, but it was my love for interior and industrial design that sparked my soul. I've finally carved my niche, crafting collections that speak the language of luxury and lifestyle. Join me on this vibrant odyssey where creativity knows no bounds, and every creation is a masterpiece of passion and purpose. Welcome to the kaleidoscopic world of Leping Ferguson.

www.lepangluxuryinteriors.com

DOWNLOAD THE MAGAZINE - [INSIDEINTERIORS.ONLINE](https://www.insideinteriors.online)



**REDEFINING
LUXURY LIVING**

@INSIDEINTERIORSMAG